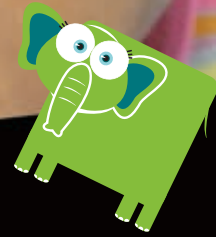


Shamir
Cool™



Shamir Cool™

Freeform Progressive Lens for Children with Eye Deviations



Shamir | ReCreating Perfect Vision®

SHAMIR COOL™ Freeform® Progressive Lens for Children with Eye Deviations

It's Thin. It's Light. It Adapts Individually.

Eye Deviations Create Vision Difficulties and Damage a Child's Self Image

Accommodative Esophoria occurs when excessive accommodation is required to compensate for far-sightedness. When a child tries to read, this Esophoria often breaks into an Accommodative Strabismus, Esotropia, commonly known as a "Squint". Squinting often leads to the development of a lazy eye, with one eye failing to develop naturally. It also affects stereoscopic vision (depth perception). At the end of the day, children with eye deviations not only experience vision difficulties, but also suffer from self-image problems due to a lopsided look around the eyes.

Scientific Studies Show that Progressive Lenses are the Sure Cure...

Early detection and treatment of accommodative squinting are essential. Studies conducted by senior Israeli ophthalmologists and specialists worldwide point to progressive lenses as the sure cure. Progressive lenses provide the ideal solution for reducing near-point stress because the focus automatically adjusts to the viewing distance, making it easier to control the squint.

...and the Aesthetically Appealing Solution

Children tend to associate bifocals with old people. As a result, bifocals on a child can lead to biting jokes on the part of peers. On the other hand, progressives look like ordinary lenses and are easier to adapt to. Even better, they are lighter and thinner than bifocals, making them more aesthetically pleasing.

Shamir Cool™: Especially Designed for Children

Shamir Cool is a state-of-the-art, personal, freeform progressive lens especially designed for children. Exceedingly thin and light, children like its look. The height of vision technology, Shamir Cool provides children with wider fields of vision through all lens zones, ensuring quicker adaptation for each user and unsurpassed vision comfort.



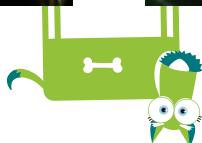
SHAMIR COOL™: Available with a Minimum Fitting Height of 13mm & 16mm

Material/Index	Power Range [D] 13mm	Power Range [D] 16mm	Add Powers [D]	Cylinder	Maximum Diameter
Hard Resin 1.5	-7.00 to +6.00	-7.00 to +4.00	2.00 – 3.50	Up to -5.00[D]	55mm
Polycarbonate 	-10.00 to +6.50	-10.00 to +6.00	2.00 – 3.50	Up to -5.00[D]	55mm
SuperLite™ 1.6 	-10.00 to +6.00	-10.00 to +6.00	2.00 – 3.50	Up to -5.00[D]	55mm

Progressive Lenses



Bifocal Lenses



Copyright © 2008 Shamir Optical Industry Ltd. All rights reserved.

Shamir, ReCreating Perfect Vision, Freeform Shamir Cool and SuperLite are trademarks or registered trademarks of Shamir.